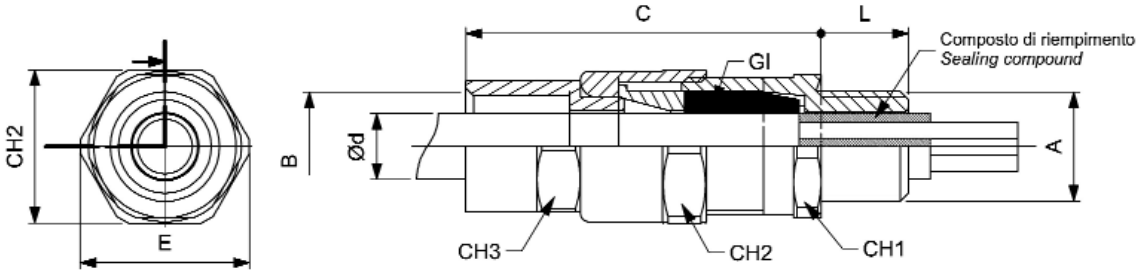


series
PMFX

BARRIER CABLE GLAND

single compression with turning female sleeve to be couple to a rigid or flexible conduit attachment



Group: II

Category: 2GD

Protection mode against gas:
Ex d IIC Gb Ex e IIC Gb

Protection mode against dust:
Ex tb IIIC Db IP66

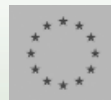
Materials: Nickel Plated Brass (B)
Stainless Steel AISI 316L (S)

Threading: NPT - ANSI/ASME B1.20.1
ISO 262 and ISO 965-1/2/3

Operating Temperature:
-40°C ÷ +100°C elastom. rings EPDM
-60°C ÷ +180°C elastom. rings SILICON

For available Accessories see pag. 15

European Certificate



INERIS 10 ATEX 0029X

Standards:

EN 60079 - 0 EN 60079 - 1
EN 60079 - 7 EN 60079 - 31

Directive ATEX 94/9/CE

International Certificate



IECEX INE 14.0003X

Standards:

IEC 60079 - 0 IEC 60079 - 1
IEC 60079 - 7 IEC 60079 - 31

EQUIPMENT IDENTIFICATION

Example: PMFX3B17

TYPE	DIMENSION	MATERIAL	OVERALL CABLE DIAMETER
PMFX	1, 2, 3, 4, 5, 6 20, 25, 32, 40, 50, 63	B = Nickel Plated Brass S = Stainless Steel AISI 316L	See ød in table

NOTE: PMFX3B - KIT: cable gland equipped with the whole range of available rings.

STANDARD CONFIGURATION

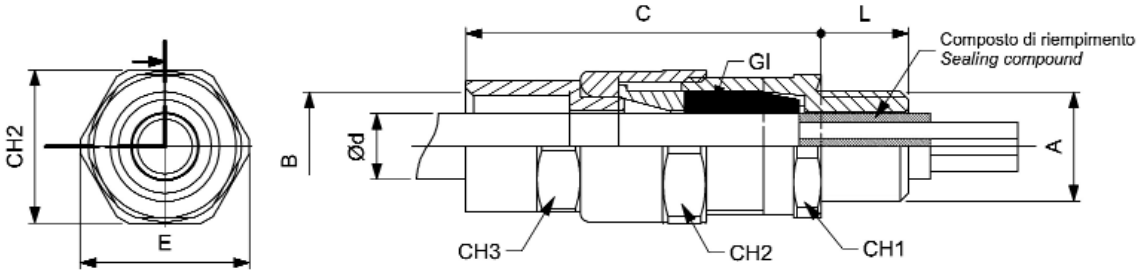
Code	A [NPT]	B [NPT]	Code	A [ISO]	B [ISO]	L NPT (ISO)	C	CH1	CH2	CH3	E	GI	ød range	Weight [Kg]	Comp. [ml]
PMFX1B7	1/2"	1/2"	PMFX20B7	M20x1.5	M20x1.5	18 (16)	64	26	28	24	31	1GI1	4 ÷ 7	0,183	2,5
PMFX1B9	"	"	PMFX20B9	"	"	"	"	"	"	"	"	1GI2	7 ÷ 9,5	"	2,5
PMFX1B12	"	"	PMFX20B12	"	"	"	"	"	"	"	"	1GI3	9 ÷ 12	"	2,5
PMFX2B12	3/4"	3/4"	PMFX25B12	M25x1.5	M25x1.5	18 (16)	64	31	34	31	37	2GI1	9 ÷ 12	0,251	5
PMFX2B14	"	"	PMFX25B14	"	"	"	"	"	"	"	"	2GI2	12 ÷ 14,5	"	5
PMFX2B17	"	"	PMFX25B17	"	"	"	"	"	"	"	"	2GI3	14 ÷ 17	"	5
PMFX3B17	1"	1"	PMFX32B17	M32x1.5	M32x1.5	23 (16)	79	42	45	45	49	3GI1	14 ÷ 17	0,486	10
PMFX3B20	"	"	PMFX32B20	"	"	"	"	"	"	"	"	3GI2	17 ÷ 20	"	10
PMFX3B23	"	"	PMFX32B23	"	"	"	"	"	"	"	"	3GI3	20 ÷ 23	"	10
PMFX4B23	1.1/4"	1.1/4"	PMFX40B23	M40x1.5	M40x1.5	23 (18)	79	46	48	48	53	4GI1	20 ÷ 23	0,604	16,5
PMFX4B26	"	"	PMFX40B26	"	"	"	"	"	"	"	"	4GI2	23 ÷ 26	"	16,5
PMFX4B29	"	"	PMFX40B29	"	"	"	"	"	"	"	"	4GI3	26 ÷ 29	"	16,5
PMFX5B23	1.1/2"	1.1/2"	PMFX50B23	M50x1.5	M50x1.5	23 (18)	79	56	58	58	64	5GI1	20 ÷ 23	0,864	25
PMFX5B26	"	"	PMFX50B26	"	"	"	"	"	"	"	"	5GI2	23 ÷ 26	"	25
PMFX5B29	"	"	PMFX50B29	"	"	"	"	"	"	"	"	5GI3	26 ÷ 29	"	25
PMFX5B32	"	"	PMFX50B32	"	"	"	"	"	"	"	"	5GI4	29 ÷ 32	"	25
PMFX5B35	"	"	PMFX50B35	"	"	"	"	"	"	"	"	5GI5	32 ÷ 35	"	25
PMFX6B39	2"	2"	PMFX63B39	M63x1.5	M63x1.5	23 (18)	79	65	68	68	75	6GI1	35 ÷ 39	1,157	50
PMFX6B42	"	"	PMFX63B42	"	"	"	"	"	"	"	"	6GI2	39 ÷ 42	"	50
PMFX6B45	"	"	PMFX63B45	"	"	"	"	"	"	"	"	6GI3	42 ÷ 45	"	50

Also available in Stainless Steel AISI 316L version. Replace the letter S with B in the code.

series
PMFX

BARRIER CABLE GLAND

single compression with turning female sleeve to be couple to a rigid or flexible conduit attachment



EQUIPMENT IDENTIFICATION

Example: **PMFX332B17**

TYPE
PMFX

DIMENSION øA
1, 2, 3, 4, 5, 6
20, 25, 32, 40, 50, 63

DIMENSION øB
1, 2, 3, 4, 5, 6
20, 25, 32, 40, 50, 63

MATERIAL
B = Nickel Plated Brass
S = Stainless Steel
AISI 316L

OVERALL CABLE DIAMETER
See ød
in table

NOTE: PMFX332B - KIT: cable gland equipped with the whole range of available rings.

MIXED CONFIGURATION

Code	A [NPT]	B [ISO]	Code	A [ISO]	B [NPT]	L NPT (ISO)	C	CH1	CH2	CH3	E	GI	ød range	Weight [Kg]	Comp. [m]
PMFX120B7	1/2"	M20x1.5	PMFX201B7	M20x1.5	1/2"	18 (16)	64	26	28	24	31	1G1	4 ÷ 7	0,183	2,5
PMFX120B9	"	"	PMFX201B9	"	"	"	"	"	"	"	"	1G2	7 ÷ 9,5	"	2,5
PMFX120B12	"	"	PMFX201B12	"	"	"	"	"	"	"	"	1G3	9 ÷ 12	"	2,5
PMFX225B12	3/4"	M25x1.5	PMFX252B12	M25x1.5	3/4"	18 (16)	64	31	34	31	37	2G1	9 ÷ 12	0,251	5
PMFX225B14	"	"	PMFX252B14	"	"	"	"	"	"	"	"	2G2	12 ÷ 14,5	"	5
PMFX225B17	"	"	PMFX252B17	"	"	"	"	"	"	"	"	2G3	14 ÷ 17	"	5
PMFX332B17	1"	M32x1.5	PMFX323B17	M32x1.5	1"	23 (16)	79	42	45	45	49	3G1	14 ÷ 17	0,486	10
PMFX332B20	"	"	PMFX323B20	"	"	"	"	"	"	"	"	3G2	17 ÷ 20	"	10
PMFX332B23	"	"	PMFX323B23	"	"	"	"	"	"	"	"	3G3	20 ÷ 23	"	10
PMFX440B23	1.1/4"	M40x1.5	PMFX404B23	M40x1.5	1.1/4"	23 (18)	79	46	48	48	53	4G1	20 ÷ 23	0,604	16,5
PMFX440B26	"	"	PMFX404B26	"	"	"	"	"	"	"	"	4G2	23 ÷ 26	"	16,5
PMFX440B29	"	"	PMFX404B29	"	"	"	"	"	"	"	"	4G3	26 ÷ 29	"	16,5
PMFX550B23	1.1/2"	M50x1.5	PMFX505B23	M50x1.5	1.1/2"	23 (18)	79	56	58	58	64	5G1	20 ÷ 23	0,864	25
PMFX550B26	"	"	PMFX505B26	"	"	"	"	"	"	"	"	5G2	23 ÷ 26	"	25
PMFX550B29	"	"	PMFX505B29	"	"	"	"	"	"	"	"	5G3	26 ÷ 29	"	25
PMFX550B32	"	"	PMFX505B32	"	"	"	"	"	"	"	"	5G4	29 ÷ 32	"	25
PMFX550B35	"	"	PMFX505B35	"	"	"	"	"	"	"	"	5G5	32 ÷ 35	"	25
PMFX663B39	2"	M63x1.5	PMFX636B39	M63x1.5	2"	23 (18)	79	65	68	68	75	6G1	35 ÷ 39	1,157	50
PMFX663B42	"	"	PMFX636B42	"	"	"	"	"	"	"	"	6G2	39 ÷ 42	"	50
PMFX663B45	"	"	PMFX636B45	"	"	"	"	"	"	"	"	6G3	42 ÷ 45	"	50

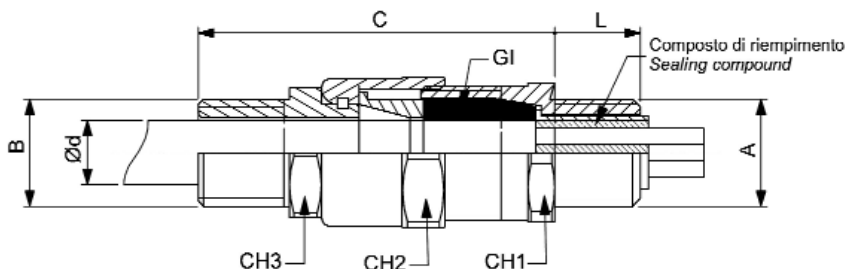
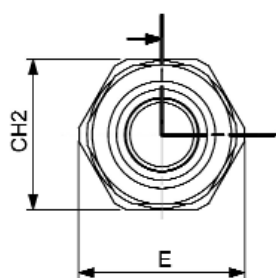
Also available in Stainless Steel AISI 316L version. Replace the letter S with B in the code.

comm@antideflagrante.com

series
PMMX

BARRIER CABLE GLAND

single compression with turning male sleeve to be couple to a rigid or flexible conduit attachment



Group: II

Category: 2GD

Protection mode against gas:
Ex d IIC Gb Ex e IIC Gb

Protection mode against dust:
Ex tb IIIC Db IP66

Materials: Nickel Plated Brass (B)
Stainless Steel AISI 316L (S)

Threading: NPT - ANSI/ASME B1.20.1
ISO 262 and ISO 965-1/2/3

Operating Temperature:
-40°C ÷ +100°C elastom. rings EPDM
-60°C ÷ +180°C elastom. rings SILICON

For available Accesories see pag. 15

European Certificate



INERIS 10 ATEX 0029X

Standards:

EN 60079 - 0 EN 60079 - 1
EN 60079 - 7 EN 60079 - 31

Directive ATEX 94/9/CE

Certificato internazionale



IECEX INE 14.0003X

Standards:

IEC 60079 - 0 IEC 60079 - 1
IEC 60079 - 7 IEC 60079 - 31

EQUIPMENT IDENTIFICATION

Example: PMMX3B17

TYPE	DIMENSION	MATERIAL	OVERALL CABLE DIAMETER
PMMX	1, 2, 3, 4, 5, 6 20, 25, 32, 40, 50, 63	B = Nickel Plated Brass S = Stainless Steel AISI 316L	See ød in table

NOTE: PMMX3B - KIT: cable gland equipped with the whole range of available rings.

STANDARD CONFIGURATION

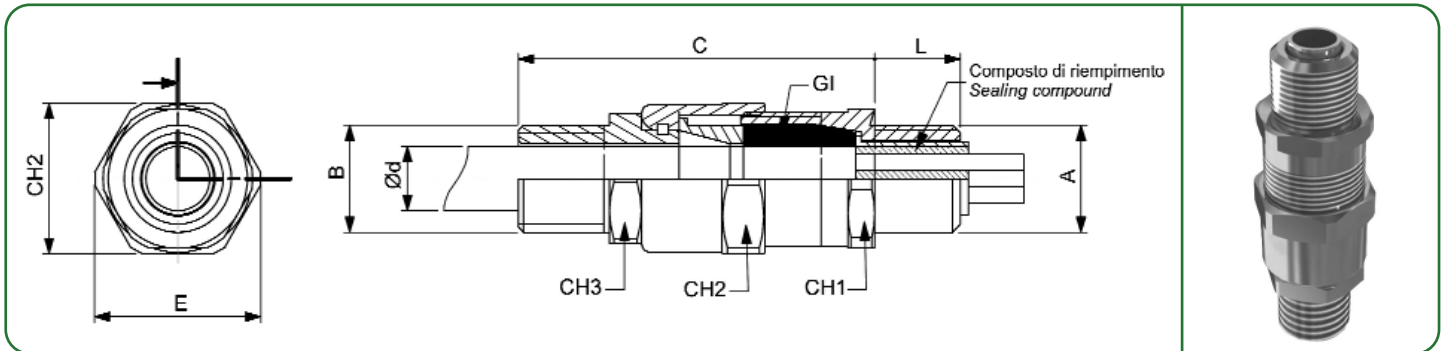
Code	A [NPT]	B [NPT]	Code	A [ISO]	B [ISO]	L NPT (ISO)	C	CH1	CH2	CH3	E	GI	ød range	Weight [Kg]	Comp. [ml]
PMMX1B7	1/2"	1/2"	PMMX20B7	M20x1.5	M20x1.5	18 (16)	65	26	28	24	31	1GI1	4 ÷ 7	0,183	2,5
PMMX1B9	"	"	PMMX20B9	"	"	"	"	"	"	"	"	1GI2	7 ÷ 9,5	"	2,5
PMMX1B12	"	"	PMMX20B12	"	"	"	"	"	"	"	"	1GI3	9 ÷ 12	"	2,5
PMMX2B12	3/4"	3/4"	PMMX25B12	M25x1.5	M25x1.5	18 (16)	65	31	34	31	37	2GI1	9 ÷ 12	0,251	5
PMMX2B14	"	"	PMMX25B14	"	"	"	"	"	"	"	"	2GI2	12 ÷ 14,5	"	5
PMMX2B17	"	"	PMMX25B17	"	"	"	"	"	"	"	"	2GI3	14 ÷ 17	"	5
PMMX3B17	1"	1"	PMMX32B17	M32x1.5	M32x1.5	23 (16)	80	42	45	45	49	3GI1	14 ÷ 17	0,486	10
PMMX3B20	"	"	PMMX32B20	"	"	"	"	"	"	"	"	3GI2	17 ÷ 20	"	10
PMMX3B23	"	"	PMMX32B23	"	"	"	"	"	"	"	"	3GI3	20 ÷ 23	"	10
PMMX4B23	1.1/4"	1.1/4"	PMMX40B23	M40x1.5	M40x1.5	23 (18)	80	46	48	48	53	4GI1	20 ÷ 23	0,604	16,5
PMMX4B26	"	"	PMMX40B26	"	"	"	"	"	"	"	"	4GI2	23 ÷ 26	"	16,5
PMMX4B29	"	"	PMMX40B29	"	"	"	"	"	"	"	"	4GI3	26 ÷ 29	"	16,5
PMMX5B23	1.1/2"	1.1/2"	PMMX50B23	M50x1.5	M50x1.5	23 (18)	80	56	58	58	64	5GI1	20 ÷ 23	0,864	25
PMMX5B26	"	"	PMMX50B26	"	"	"	"	"	"	"	"	5GI2	23 ÷ 26	"	25
PMMX5B29	"	"	PMMX50B29	"	"	"	"	"	"	"	"	5GI3	26 ÷ 29	"	25
PMMX5B32	"	"	PMMX50B32	"	"	"	"	"	"	"	"	5GI4	29 ÷ 32	"	25
PMMX5B35	"	"	PMMX50B35	"	"	"	"	"	"	"	"	5GI5	32 ÷ 35	"	25
PMMX6B39	2"	2"	PMMX63B39	M63x1.5	M63x1.5	23 (18)	80	65	68	68	75	6GI1	35 ÷ 39	1,157	50
PMMX6B42	"	"	PMMX63B42	"	"	"	"	"	"	"	"	6GI2	39 ÷ 42	"	50
PMMX6B45	"	"	PMMX63B45	"	"	"	"	"	"	"	"	6GI3	42 ÷ 45	"	50

Also available in Stainless Steel AISI 316L version. Replace the letter S with B in the code.

series
PMMX

BARRIER CABLE GLAND

single compression with turning male sleeve to be couple to a rigid or flexible conduit attachment



EQUIPMENT IDENTIFICATION

Example: PMMX332B17

TYPE
PMMX

DIMENSION $\varnothing A$
1, 2, 3, 4, 5, 6
20, 25, 32, 40, 50, 63

DIMENSION $\varnothing B$
1, 2, 3, 4, 5, 6
20, 25, 32, 40, 50, 63

MATERIAL
B = Nickel Plated Brass
S = Stainless Steel
AISI 316L

OVERALL CABLE DIAMETER
See $\varnothing d$
in table

NOTE: PMMX332B - KIT: cable gland equipped with the whole range of available rings.

MIXED CONFIGURATION

Code	A [NPT]	B [ISO]	Code	A [ISO]	B [NPT]	L NPT (ISO)	C	CH1	CH2	CH3	E	GI	$\varnothing d$ range	Weight [Kg]	Comp. [m]
PMMX120B7	1/2"	M20x1.5	PMMX201B7	M20x1.5	1/2"	18 (16)	65	26	28	24	31	1G11	4 ÷ 7	0,183	2,5
PMMX120B9	"	"	PMMX201B9	"	"	"	"	"	"	"	"	1G12	7 ÷ 9,5	"	2,5
PMMX120B12	"	"	PMMX201B12	"	"	"	"	"	"	"	"	1G13	9 ÷ 12	"	2,5
PMMX225B12	3/4"	M25x1.5	PMMX252B12	M25x1.5	3/4"	18 (16)	65	31	34	31	37	2G11	9 ÷ 12	0,251	5
PMMX225B14	"	"	PMMX252B14	"	"	"	"	"	"	"	"	2G12	12 ÷ 14,5	"	5
PMMX225B17	"	"	PMMX252B17	"	"	"	"	"	"	"	"	2G13	14 ÷ 17	"	5
PMMX332B17	1"	M32x1.5	PMMX323B17	M32x1.5	1"	23 (16)	80	42	45	45	49	3G11	14 ÷ 17	0,486	10
PMMX332B20	"	"	PMMX323B20	"	"	"	"	"	"	"	"	3G12	17 ÷ 20	"	10
PMMX332B23	"	"	PMMX323B23	"	"	"	"	"	"	"	"	3G13	20 ÷ 23	"	10
PMMX440B23	1.1/4"	M40x1.5	PMMX404B23	M40x1.5	1.1/4"	23 (18)	80	46	48	48	53	4G11	20 ÷ 23	0,604	16,5
PMMX440B26	"	"	PMMX404B26	"	"	"	"	"	"	"	"	4G12	23 ÷ 26	"	16,5
PMMX440B29	"	"	PMMX404B29	"	"	"	"	"	"	"	"	4G13	26 ÷ 29	"	16,5
PMMX550B23	1.1/2"	M50x1.5	PMMX505B23	M50x1.5	1.1/2"	23 (18)	80	56	58	58	64	5G11	20 ÷ 23	0,864	25
PMMX550B26	"	"	PMMX505B26	"	"	"	"	"	"	"	"	5G12	23 ÷ 26	"	25
PMMX550B29	"	"	PMMX505B29	"	"	"	"	"	"	"	"	5G13	26 ÷ 29	"	25
PMMX550B32	"	"	PMMX505B32	"	"	"	"	"	"	"	"	5G14	29 ÷ 32	"	25
PMMX550B35	"	"	PMMX505B35	"	"	"	"	"	"	"	"	5G15	32 ÷ 35	"	25
PMMX663B39	2"	M63x1.5	PMMX636B39	M63x1.5	2"	23 (18)	80	65	68	68	75	6G11	35 ÷ 39	1,157	50
PMMX663B42	"	"	PMMX636B42	"	"	"	"	"	"	"	"	6G12	39 ÷ 42	"	50
PMMX663B45	"	"	PMMX636B45	"	"	"	"	"	"	"	"	6G13	42 ÷ 45	"	50

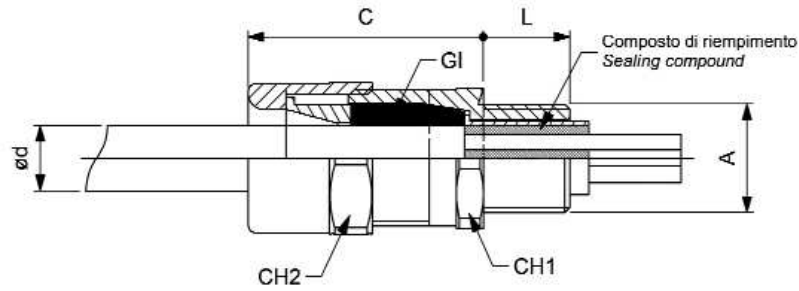
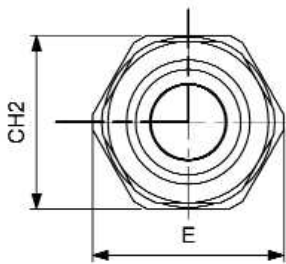
Also available in Stainless Steel AISI 316L version. Replace the letter S with B in the code.

comm@antideflagrante.com

series
PMX

BARRIER CABLE GLAND

single compression for unarmoured cable



Group: II

Category: 2GD

Protection mode against gas:
Ex d IIC Gb Ex e IIC Gb

Protection mode against dust:
Ex tb IIIC Db IP66

Materials: Nickel Plated Brass (B)
Stainless Steel AISI 316L (S)

Threading: NPT - ANSI/ASME B1.20.1
ISO 262 and ISO 965-1/2/3

Operating Temperature:
-40°C ÷ +100°C elastom. rings EPDM
-60°C ÷ +180°C elastom. rings SILICON

For available Accesories see pag. 15

European Certificate



INERIS 10 ATEX 0029X

Standards:
EN 60079 - 0 EN 60079 - 1
EN 60079 - 7 EN 60079 - 31

Directive ATEX 94/9/CE

International Certificate



IECEx INE 14.0003X

Standards:
IEC 60079 - 0 IEC 60079 - 1
IEC 60079 - 7 IEC 60079 - 31

EQUIPMENT IDENTIFICATION

Example: PMX3B17

TYPE	DIMENSION	MATERIAL	OVERALL CABLE DIAMETER
PMX	1, 2, 3, 4, 5, 6	B = Nickel Plated Brass	Vedi ød in tabella
	20, 25, 32, 40, 50, 63	S = Stainless Stell AISI 316L	

NOTE: PMX3B - KIT: cable gland equipped with the whole range of available rings.

Code	A [NPT]	Code	A [ISO]	L NPT (ISO)	C	CH1	CH2	E	GI	ød range	Weight [Kg]	Comp. [ml]
PMX1B7	1/2"	PMX20B7	M20x1.5	18 (16)	43	26	28	31	1GI1	4 ÷ 7	0,142	2,5
PMX1B9	"	PMX20B9	"	"	"	"	"	"	1GI2	7 ÷ 9,5	"	2,5
PMX1B12	"	PMX20B12	"	"	"	"	"	"	1GI3	9 ÷ 12	"	2,5
PMX2B12	3/4"	PMX25B12	M25x1.5	18 (16)	43	31	34	37	2GI1	9 ÷ 12	0,183	5
PMX2B14	"	PMX25B14	"	"	"	"	"	"	2GI2	12 ÷ 14,5	"	5
PMX2B17	"	PMX25B17	"	"	"	"	"	"	2GI3	14 ÷ 17	"	5
PMX3B17	1"	PMX32B17	M32x1.5	23 (16)	52	42	45	49	3GI1	14 ÷ 17	0,405	10
PMX3B20	"	PMX32B20	"	"	"	"	"	"	3GI2	17 ÷ 20	"	10
PMX3B23	"	PMX32B23	"	"	"	"	"	"	3GI3	20 ÷ 23	"	10
PMX4B23	1.1/4"	PMX40B23	M40x1.5	23 (18)	52	46	48	53	4GI1	20 ÷ 23	0,453	16,5
PMX4B26	"	PMX40B26	"	"	"	"	"	"	4GI2	23 ÷ 26	"	16,5
PMX4B29	"	PMX40B29	"	"	"	"	"	"	4GI3	26 ÷ 29	"	16,5
PMX5B23	1.1/2"	PMX50B23	M50x1.5	23 (18)	52	56	58	64	5GI1	20 ÷ 23	0,685	25
PMX5B26	"	PMX50B26	"	"	"	"	"	"	5GI2	23 ÷ 26	"	25
PMX5B29	"	PMX50B29	"	"	"	"	"	"	5GI3	26 ÷ 29	"	25
PMX5B32	"	PMX50B32	"	"	"	"	"	"	5GI4	29 ÷ 32	"	25
PMX5B35	"	PMX50B35	"	"	"	"	"	"	5GI5	32 ÷ 35	"	25
PMX6B39	2"	PMX63B39	M63x1.5	23 (18)	52	65	68	75	6GI1	35 ÷ 39	0,836	50
PMX6B42	"	PMX63B42	"	"	"	"	"	"	6GI2	39 ÷ 42	"	50
PMX6B45	"	PMX63B45	"	"	"	"	"	"	6GI3	42 ÷ 45	"	50

Also available in Stainless Steel AISI 316L version. Replace the letter S with B in the code.

EXTERNAL SHROUDS SERIES SPM

Material: PVC BLACK

The Shrouds for cableglands are used to prevent deposits of dust or other substances on the surface of the cablegland and cable entry.

Code	Dimensions	
	NPT	ISO
SPM1	1/2"	M20x1,5
SPM2	3/4"	M25x1,5
SPM3	1"	M32x1,5
SPM4	1.1/4"	M40x1,5
SPM5	1.1/2"	M50x1,5
SPM6	2"	M63x1,5



EARTHING TAG SERIES ET

Material: Nickel plated Brass (B)
Stainless Steel AISI 316L (S)

The Earthing Tags are installed between the cable gland and the electrical equipment.

Code	Dimensions	Code	Dimensions
	ISO		NPT
ET20B	M20x1.5	ET1B	1/2"
ET25B	M25x1.5	ET2B	3/4"
ET32B	M32x1.5	ET3B	1"
ET40B	M40x1.5	ET4B	1.1/4"
ET50B	M50x1.5	ET5B	1.1/2"
ET63B	M63x1.5	ET6B	2"



LOCKNUT SERIES DL

Material: Nickel plated Brass (B)
Stainless Steel AISI 316L (S)

The Locknuts are used to hold the cable gland, adaptors or plugs up to the walls of the equipment. Ensure the restraining to the entry of enclosure.

Code	Dimensions	Code	Dimensions	Dimens. Key
	ISO		NPT	
DL20B	M20x1.5	DL1B	1/2"	24
DL25B	M25x1.5	DL2B	3/4"	30
DL32B	M32x1.5	DL3B	1"	36
DL40B	M40x1.5	DL4B	1.1/4"	46
DL50B	M50x1.5	DL5B	1.1/2"	56
DL63B	M63x1.5	DL6B	2"	70



SERRATED WASHER SERIES SR

Material: Nickel plated Brass (B)
Stainless Steel AISI 316L (S)

The Serrated washers are used together with lock nuts to prevent the loose of the attachment.

Code	Dimensions	Code	Dimensions
	ISO		NPT
SR20B	M20x1.5	SR1B	1/2"
SR25B	M25x1.5	SR2B	3/4"
SR32B	M32x1.5	SR3B	1"
SR40B	M40x1.5	SR4B	1.1/4"
SR50B	M50x1.5	SR5B	1.1/2"
SR63B	M63x1.5	SR6B	2"

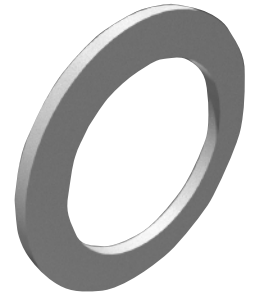


GASKET SERIES SW

Material: Nylon White (N)

When installed according to the provided use and maintenance instructions, the cable glands must be able to provide, together with enclosure they are secured to the same grade of protection as the enclosure itself. In order to obtain the required grade of protection, it may be necessary to use a Gasket.

Code	Dimensions	
	ISO	NPT
SW20N	M20x1.5	1/2"
SW25N	M25x1.5	3/4"
SW32N	M32x1.5	1"
SW40N	M40x1.5	1.1/4"
SW50N	M50x1.5	1.1/2"
SW63N	M63x1.5	2"

**FILLING COMPOUND - BICOMPONENT RESIN REPM-1**

Epoxide resin with an excellent resistance grade to chemicals, heat and water. It is available in 50 ml cartridges. It is used as sealant into the Cable Glands bushing series PMX, PMAX, and PMFX to prevent the propagation of the flames. Operative temperature: -20°C ÷ +80°C.

(*) The value is purely indicative. The real number depends on the type and the dimension of the cable used.

Dim.	N° cableglands
1	20 (*)
2	10 (*)
3	5 (*)
4	3 (*)
5	2 (*)
6	1 (*)

**MANUAL APPLICATOR FOR 50ml CARTRIDGE SERIES APM50**

Using with REPM-1 50ml cartridges. Lightweight, easy to use applicator. It is reusable. Quick and easy to load, usable with one hand. The article code is APM50.

**REPLACEMENT NOZZLE FOR 50ml CARTRIDGE SERIES BC-REPM-1**

Replacement nozzle for REPM-1 50ml cartridge.

