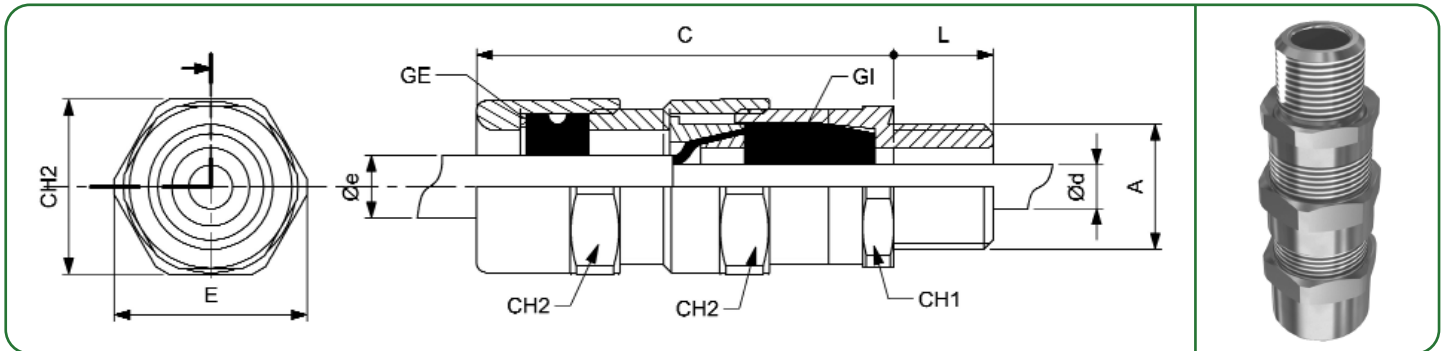


series
PMA

CABLE GLAND

double compression for armoured cable



Group: II
Category: 2GD
Protection mode against gas:
 Ex d IIC Gb Ex e IIC Gb
Protection mode against dust:
 Ex tb IIIC Db IP66
Materials: Nickel Plated Brass (B)
Stainless Steel AISI 316L (S)
Threading: NPT - ANSI/ASME B1.20.1
ISO 262 and ISO 965-1/2/3
Operating Temperature:
 -40°C ÷ +100°C elastom. rings EPDM
 -60°C ÷ +180°C elastom. rings SILICON
For available Accesories see pag. 15

European Certificate
 **INERIS 10 ATEX 0029X**
Standards:
 EN 60079 - 0 EN 60079 - 1
 EN 60079 - 7 EN 60079 - 31
Directive ATEX 94/9/CE

International Certificate
 **IECEx INE 14.0003X**
Standards:
 IEC 60079 - 0 IEC 60079 - 1
 IEC 60079 - 7 IEC 60079 - 31

EQUIPMENT IDENTIFICATION

Example: PMA3B17

TYPE	DIMENSION	MATERIAL	CABLE BEDDING DIAMETER	OVERALL CABLE DIAMETER
PMA	1, 2, 3, 4, 5, 6 20, 25, 32, 40, 50, 63	B = Nickel Plated Brass S = Stainless Stell AISI 316L	See ød in table	See øe in table

NOTE: PMA3B - KIT: cable gland equipped with the whole range of available rings.

Code	A [NPT]	Code	A [ISO]	L NPT (ISO)	C	CH1	CH2	E	GI	ød range	GE	øe range	Weight [Kg]
PMA1B710	1/2"	PMA20B710	M20x1.5	18 (16)	67	26	28	31	1GI1	4 ÷ 7	1GE1	6 ÷ 10	0,192
PMA1B913	"	PMA20B913	"	"	"	"	"	"	1GI2	7 ÷ 9,5	1GE2	10 ÷ 13	"
PMA1B1218	"	PMA20B1218	"	"	"	"	"	"	1GI3	9 ÷ 12	1GE3	13 ÷ 18	"
PMA2B1218	3/4"	PMA25B1218	M25x1.5	18 (16)	67	31	34	37	2GI1	9 ÷ 12	2GE1	13 ÷ 18	0,253
PMA2B1418	"	PMA25B1418	"	"	"	"	"	"	2GI2	12 ÷ 14,5	2GE1	13 ÷ 18	"
PMA2B1723	"	PMA25B1723	"	"	"	"	"	"	2GI3	14 ÷ 17	2GE2	18 ÷ 23	"
PMA3B1723	1"	PMA32B1723	M32x1.5	23 (16)	83	42	45	49	3GI1	14 ÷ 17	3GE1	18 ÷ 23	0,546
PMA3B2026	"	PMA32B2026	"	"	"	"	"	"	3GI2	17 ÷ 20	3GE2	21 ÷ 26	"
PMA3B2330	"	PMA32B2330	"	"	"	"	"	"	3GI3	20 ÷ 23	3GE3	24 ÷ 30	"
PMA4B2330	1.1/4"	PMA40B2330	M40x1.5	23 (18)	83	46	48	53	4GI1	20 ÷ 23	4GE1	24 ÷ 30	0,600
PMA4B2635	"	PMA40B2635	"	"	"	"	"	"	4GI2	23 ÷ 26	4GE2	29 ÷ 35	"
PMA4B2935	"	PMA40B2935	"	"	"	"	"	"	4GI3	26 ÷ 29	4GE2	29 ÷ 35	"
PMA5B2331	1.1/2"	PMA50B2331	M50x1.5	23 (18)	83	56	58	64	5GI1	20 ÷ 23	5GE1	26 ÷ 31	0,884
PMA5B2637	"	PMA50B2637	"	"	"	"	"	"	5GI2	23 ÷ 26	5GE2	31 ÷ 37	"
PMA5B2937	"	PMA50B2937	"	"	"	"	"	"	5GI3	26 ÷ 29	5GE2	31 ÷ 37	"
PMA5B3243	"	PMA50B3243	"	"	"	"	"	"	5GI4	29 ÷ 32	5GE3	36 ÷ 43	"
PMA5B3543	"	PMA50B3543	"	"	"	"	"	"	5GI5	32 ÷ 35	5GE3	36 ÷ 43	"
PMA6B3946	2"	PMA63B3946	M63x1.5	23 (18)	83	65	68	75	6GI1	35 ÷ 39	6GE1	42 ÷ 46	1,081
PMA6B4249	"	PMA63B4249	"	"	"	"	"	"	6GI2	39 ÷ 42	6GE2	45 ÷ 49	"
PMA6B4552	"	PMA63B4552	"	"	"	"	"	"	6GI3	42 ÷ 45	6GE3	48 ÷ 52	"

Also available in Stainless Steel AISI 316L version. Replace the letter S with B in the code.

EXTERNAL SHROUDS SERIES SPM

Material: PVC BLACK

The Shrouds for cableglands are used to prevent deposits of dust or other substances on the surface of the cablegland and cable entry.

Code	Dimensions	
	NPT	ISO
SPM1	1/2"	M20x1,5
SPM2	3/4"	M25x1,5
SPM3	1"	M32x1,5
SPM4	1.1/4"	M40x1,5
SPM5	1.1/2"	M50x1,5
SPM6	2"	M63x1,5



EARTHING TAG SERIES ET

Material: Nickel plated Brass (B)
Stainless Steel AISI 316L (S)

The Earthing Tags are installed between the cable gland and the electrical equipment.

Code	Dimensions	Code	Dimensions
	ISO		NPT
ET20B	M20x1.5	ET1B	1/2"
ET25B	M25x1.5	ET2B	3/4"
ET32B	M32x1.5	ET3B	1"
ET40B	M40x1.5	ET4B	1.1/4"
ET50B	M50x1.5	ET5B	1.1/2"
ET63B	M63x1.5	ET6B	2"

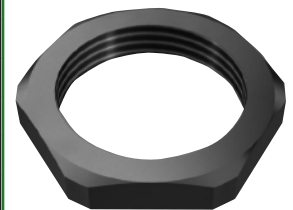


LOCKNUT SERIES DL

Material: Nickel plated Brass (B)
Stainless Steel AISI 316L (S)

The Locknuts are used to hold the cable gland, adaptors or plugs up to the walls of the equipment. Ensure the restraining to the entry of enclosure.

Code	Dimensions	Code	Dimensions	Dimens. Key
	ISO		NPT	
DL20B	M20x1.5	DL1B	1/2"	24
DL25B	M25x1.5	DL2B	3/4"	30
DL32B	M32x1.5	DL3B	1"	36
DL40B	M40x1.5	DL4B	1.1/4"	46
DL50B	M50x1.5	DL5B	1.1/2"	56
DL63B	M63x1.5	DL6B	2"	70



SERRATED WASHER SERIES SR

Material: Nickel plated Brass (B)
Stainless Steel AISI 316L (S)

The Serrated washers are used together with lock nuts to prevent the loose of the attachment.

Code	Dimensions	Code	Dimensions
	ISO		NPT
SR20B	M20x1.5	SR1B	1/2"
SR25B	M25x1.5	SR2B	3/4"
SR32B	M32x1.5	SR3B	1"
SR40B	M40x1.5	SR4B	1.1/4"
SR50B	M50x1.5	SR5B	1.1/2"
SR63B	M63x1.5	SR6B	2"

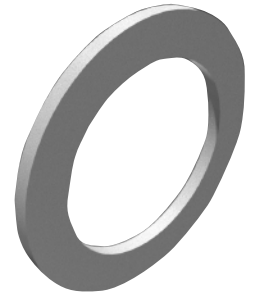


GASKET SERIES SW

Material: Nylon White (N)

When installed according to the provided use and maintenance instructions, the cable glands must be able to provide, together with enclosure they are secured to the same grade of protection as the enclosure itself. In order to obtain the required grade of protection, it may be necessary to use a Gasket.

Code	Dimensions	
	ISO	NPT
SW20N	M20x1.5	1/2"
SW25N	M25x1.5	3/4"
SW32N	M32x1.5	1"
SW40N	M40x1.5	1.1/4"
SW50N	M50x1.5	1.1/2"
SW63N	M63x1.5	2"

**FILLING COMPOUND - BICOMPONENT RESIN REPM-1**

Epoxide resin with an excellent resistance grade to chemicals, heat and water. It is available in 50 ml cartridges. It is used as sealant into the Cable Glands bushing series PMX, PMAX, and PMFX to prevent the propagation of the flames. Operative temperature: -20°C ÷ +80°C.

(*) The value is purely indicative. The real number depends on the type and the dimension of the cable used.

Dim.	N° cableglands
1	20 (*)
2	10 (*)
3	5 (*)
4	3 (*)
5	2 (*)
6	1 (*)

**MANUAL APPLICATOR FOR 50ml CARTRIDGE SERIES APM50**

Using with REPM-1 50ml cartridges. Lightweight, easy to use applicator. It is reusable. Quick and easy to load, usable with one hand. The article code is APM50.

**REPLACEMENT NOZZLE FOR 50ml CARTRIDGE SERIES BC-REPM-1**

Replacement nozzle for REPM-1 50ml cartridge.

